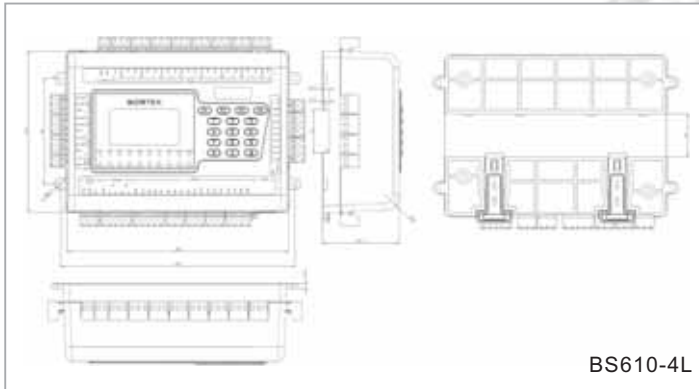




BS610-4L



## Dimensions (Unit: mm)



BS610-4L

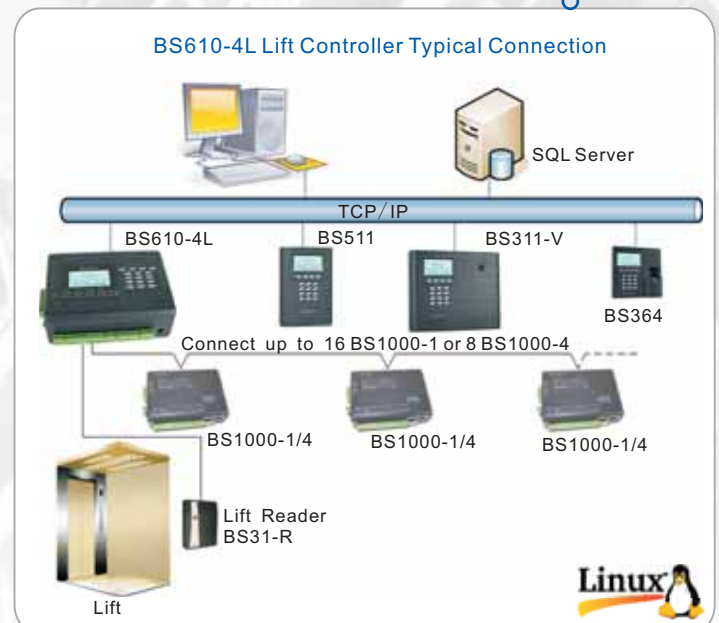
## Features

- ★ Design with 32 bit ARM Processor, speed up to 200MHz; running on embedded LINUX OS.
- ★ Standalone Operation or direct connection to PC via TCP/IP. Connection via TCP/IP converter is not required. Transmission speed up to 100 Mbps.
- ★ Control up to 128 floors per lift car.
- ★ Supports integration with Bostex Telephone Entry Reader for visitor intercom function.
- ★ Store up to 100,000 cards and 100,000 off-line transactions.
- ★ Intuitive multiple language menu supported by integral backlit Graphic LCD and keypad.
- ★ Built-in watchdog to prevent the system from locking up and provides auto recovery.
- ★ Supports non-volatile Flash Memory. Data retain up to 10 years without main power.
- ★ Recoverable up to the latest 100,000 transaction if back end system failure.
- ★ Firmware Online Upgrade via TCP/IP.
- ★ Supports Bostex or 3rd party external RS485 reader such as EM, Mifare, HID, iClass, CEPAS, TI and CPU card reader.
- ★ Built-in Sedona Framework™ supported field programmable logic (PLC) and managing BMS integration at the lowest level; provide decision power at the edge device level.
- ★ Supports field programmable logic for complex lift integration requirement.
- ★ CE Certified.

## Functional List

Function	Description
Connection to External Card Reader	BS RS485 reader, BS1000-5, BS36K-U or BS361K-U
Connection to External IO Module	Connect up to 14 BS1000-1 (8 IO per board) or 7 BS1000-4 (16 DO per board). Control up to 128 floors.
Connection to PC	(1) RS485 or TCP/IP (2) Use keypad to setup Controller ID 001-255 (3) Use keypad to set IP Address, Subnet Mask and Gateway
Add/Delete Card in standalone mode	Yes
Same Card Delay	0-255 seconds. Factory default is 0 second.
Time Zone Control	32 set of time zone
Holiday Control	Yes
Lost/Inhibit Card	Yes
Card Start and Expiry Date Validation	Yes
Card Number Process	1-4 bytes, 1-10 digits. Default is 4 bytes
Card Number Display Format	HEX, DEC, ABA, User Code. Default is DEC
Communication Monitoring	Yes
Tamper Alarm	Built-in tamper input. If controller is opened, an alarm status and record will send to the PC.
RS485 Reader ID setting	Via controller
Power Supply Monitoring	Main power failure alert and backup battery low voltage alert
External Backup Battery with charging capability	Yes

## ▼ Connection Diagram

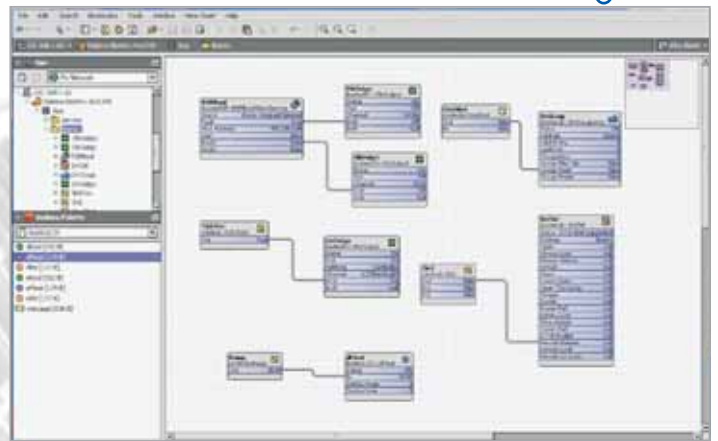


## BS610-4L

### Technical Specification

Parameter	
CPU	32 bits ARM9 processor speed up till 200MHz
RAM	64MB SDRAM
Flash	16MB NOR Flash
Operating System	LINUX
Card Capacity	100, 000
Card Response Time	Less than 0.5 seconds searching from a 100,000 card capacity
Record Capacity	100, 000
Lift Floors Supported	Up to 128
Serial COM Port	3 COM port
	(1) COM1 – PC, 2 <sup>nd</sup> level controller, IO, DC
	(2) COM2 – BS1000-5, BS1000-1, BS36K-U, BS361K-U
TCP/IP	(3) COM0 – Factory (Reserved)
	1, 10/100 Mbps
	1 Master USB
USB	1 Master USB
JTAG	1
Keypad	4x4 (0-9, *, #, F1-F4); Blue Backlit
LCD	128x64 pixels Graphic; White Backlit
TTL Input	16; Used for PLC programming and system integration.
Analog Input	7
Relay Output	8, 12V/1A, use to control lift button.
TTL Output	8, 5V/300mA, use to control lift button via external relay.
Built-in Hardware Watchdog	Yes
Built-in Real Time Clock	Yes
Tamper Switch Input	Yes
Buzzer	Yes
Real Time Clock Battery	JN80H-3, 3.6V
Power Supply	9~30VDC, 600mA
Operating Environment	-10~50 °C
Humidity	0%~90% non condensing
Dimensions	129 x 190 x 63 mm
Weight	750g
Casing	ABS flame-resistant
Mounting	Din rail mount
Technical Compliance	EN 55022, EN 61000-3-2, EN 61000-3-3, EN 55024 and EN 50130-4
Certifications	CE marking

### ▼ PLC Designer (Sedona Workbench)



### ▼ Model Selection

Model	Description
BS610-4L	TCP/IP Lift controller

### ▼ Accessories

Model	Description
BS1000-5	Remote Door Controller install in secure area to connect Lift reader.
BS1000-1	Remote 8IO Expansion Module to connect Lift button..
BS1000-1	Remote 16DO Expansion Module to connect Lift button..